



I'm Kandice White, a Realtor® with Murney Associates, Realtors, serving buyers, sellers, and investors across Southwest Missouri. Licensed since January 2020, I focus on building relationships and being a trusted resource, not just completing transactions. I guide my clients through every step of the process with honesty, clear communication, and strong local market knowledge so they can make confident, informed real estate decisions.

[Visit Kandice White, Realtor Online](#)



Missed the latest episode of Good Morning, Marshfield? No worries! Watch the latest episode or catch up on past ones here!

[Watch Here](#)

### **Our 2026 Networking Dates Are Here!**

We're gearing up for another great year, and we can't wait to see you.

Our monthly networking events kick off on January 21st!

Each month brings an opportunity to learn something new from our guest speaker, network with other business leaders, and enjoy a delicious meal! Go ahead and get these dates on your calendar so you don't miss a single one!

We cannot wait to see you there!

# 2026 Networking Dates

**January 21, 2026**

**February 18, 2026**

**March 18, 2026**

**April 15, 2026**

**May 20, 2026**

**June 17, 2026**

**July 15, 2026**

**August 19, 2026**

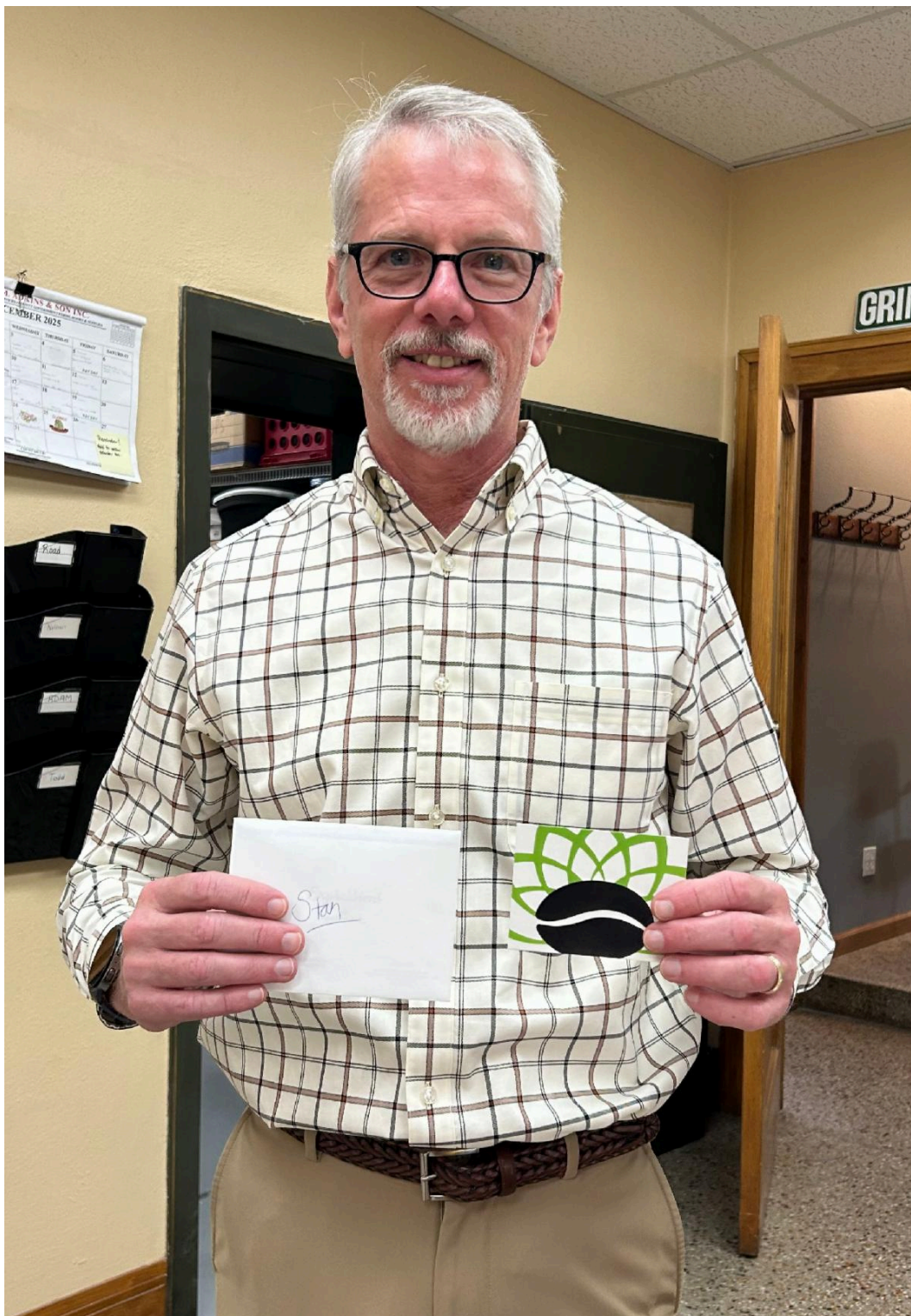
**September 16, 2026**

**October 21, 2026**

**November 18, 2026**







### ✨ Thankful Thursday: Christmas Edition! ✨

This week's Thankful Thursday spotlight shines on Stan Whitehurst (Webster County) for a simple but meaningful act of kindness that made a big difference in someone's day.

Here's what Robert shared about Stan's quick thinking and helping hand:

"While removing a box of flyers from my vehicle, I dropped it and the flyers went every direction. It was a slightly windy day and they were quickly tumbling toward the street. I was frantically trying to gather the flyers but there were too many. I suddenly realized someone had stopped and was quickly grabbing flyers. It took us a bit but eventually the flyers were back in the box. I appreciate a true public servant who is willing to help a friend in need. Thank you, Stan Whitehurst! You really saved the day ... and the flyers."

Stan, going above and beyond is simply who you are. Your genuine kindness and willingness to help—no matter the situation—make our community stronger, and we're incredibly fortunate to have you serving Webster County. Thank you for saving the day in more ways than one! We hope you enjoy your special treat to **Dripz and Dreamz LLC, Mo-Lo!**

Who do you know that goes above and beyond to serve our community?  
Nominate them for Thankful Thursday

[Submit a Thankful Thursday Nomination](#)



### **New Year Weight Loss Challenge Reminder!**

We kick things off January 2–7 with your first official weigh-in week — and then we roll straight into the full challenge ending March 4!

\$20 cash entry fee  
First weigh-in: January 2–7  
Final weigh-in: March 4

**BONUS:** Everyone who signs up gets 10% OFF one-time purchase during January!

Start strong, stay accountable, and crush your goals with us. Stop by Hometown Supplements or message us to get signed up. Let's make this your year

Hometown Supplements is located at  
1100 Spur Dr. Suite 15, Marshfield



# NEW YEAR WEIGHT LOSS CHALLENGE!

**\$20 ENTRY FEE**

**START DATE: JANUARY 2ND**

**DURATION: 8 WEEKS**

**WHO CAN JOIN: EVERYONE  
READY TO CRUSH THEIR GOALS!**

- Accountability & motivation from our community
- Weekly check-ins & progress tracking
- Recognition for top achievers

**PRIZES:**

**GRAND PRIZE: 55%**

**RUNNER-UP: 30%**

**3RD PLACE: 15%**

**THE MORE THAT ENTER, THE LARGER THE PRIZE POOL!**

**JOIN NOW**  
**\$20 ENTRY FEE**

**Hometown**  
SUPPLEMENTS

# Thank You!

## ✦ Thank You for Being Part of the Marshfield Chamber! ✦

Thank you so much for your continued support of the Marshfield Chamber. We truly appreciate each of you and the role you play in keeping our Chamber strong.

This year, we're excited to share that the Marshfield Chamber has grown to 260 members — a milestone worth celebrating and a great reflection of the strength of our business community.

We also launched Good Morning Marshfield, our weekly broadcast created to keep our community informed and highlight our members. And in case you missed it, the Chamber moved offices this year — we're now located right in the heart of downtown Marshfield at 222-A South Crittenden.

Our monthly networking events continue to grow, and it's been wonderful watching members connect, share ideas, and build relationships. Thankful Thursday has also remained a favorite in our community, giving us the chance to recognize those who go above and beyond to serve Marshfield and Webster County.

As we look ahead to 2026, we'll continue focusing on ways to provide value to your membership and support the businesses that make our community what it is.

Thank you again for being part of the Marshfield Chamber. We're excited for what's ahead and look forward to another great year together.

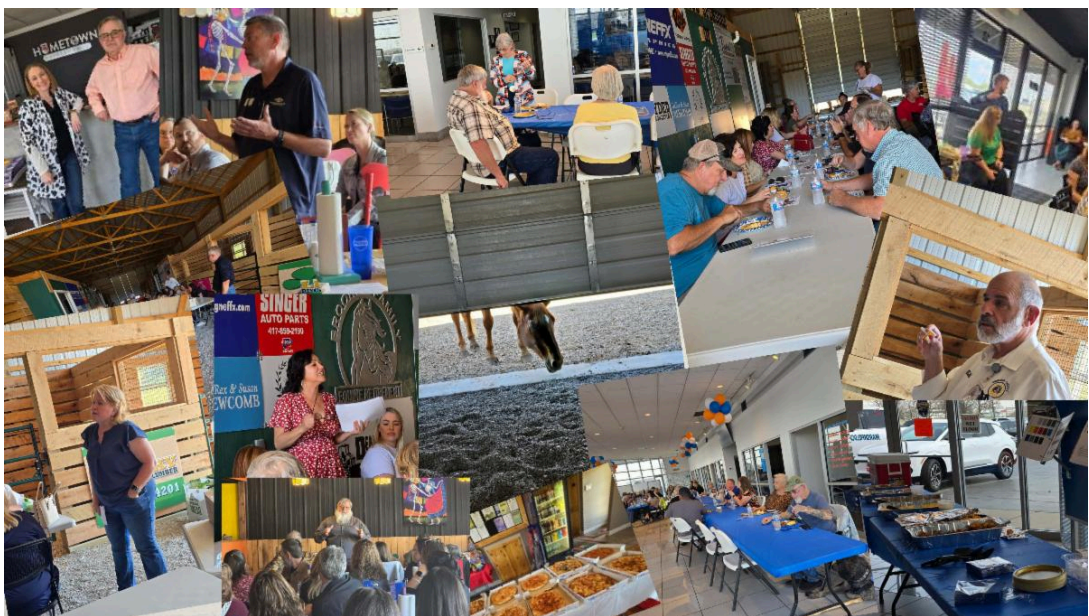
















**Marshfield Area Chamber of Commerce**

**PO Box 860**

**Marshfield, MO 65706**

**(417) 859-3925**

**[director@discovermarshfield.com](mailto:director@discovermarshfield.com)**



Marshfield Area Chamber of Commerce | 720 W Hubble | Marshfield, MO 65706 US

[Unsubscribe](#) | [Update Profile](#) | [Constant Contact Data Notice](#)



Try email marketing for free today!